



# YOUR EWVP SOLUTIONS GUIDE

**BOOM** SHERRIN

# At BOOM Sherrin we're much more than just an elevated work platform supplier.

For more than 40 years now we've been offering tailored EWP solutions from a comprehensive equipment fleet Australia-wide; backed by on-call sales and service assistance; reliable solutions and one of the safest working practices in the industry.

## GRADEABILITY CONVERSION

### Gradeability

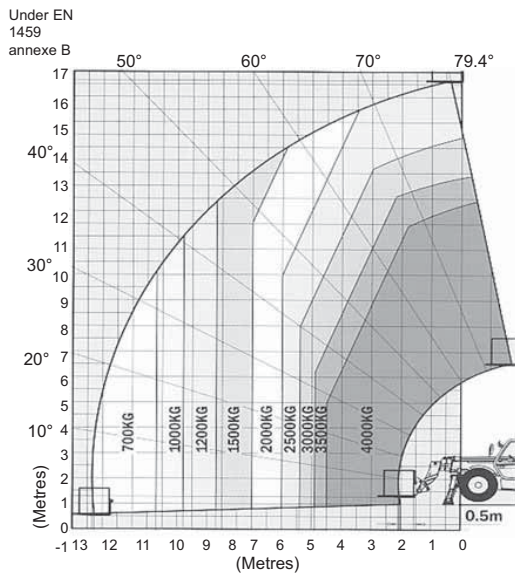
5%	10%	15%	20%	25%	30%	35%	40%	45%	50%	55%	60%
2.86	5.71	8.53	11.31	14.04	16.70	19.29	21.80	24.23	26.57	28.81	30.96

### Degrees

### PLEASE NOTE

Every effort has been made to accurately specify our equipment in the following pages. Due to availability of equipment actual makes & models supplied may vary from what is indicated. BOOM Sherrin specifies "Working Height" at a standard additional height of 6ft (1.8m) above the manufacturer's specified platform height.

## Range Chart



# 56' MATERIAL HANDLER

For more information on this equipment or if you require a free onsite inspection, contact our team

# 136 132

## Specifications

Lift height	16.65 m
Max lift capacity	4000 kg
Max reach	12.35 m
Operating weight	11220 kg
Length less forks	5.96 m
Width	2.45 m
Height	2.59 m
Wheelbase	1.99 m
Ground clearance	0.50 m
Turning radius (outside wheels)	4.15 m

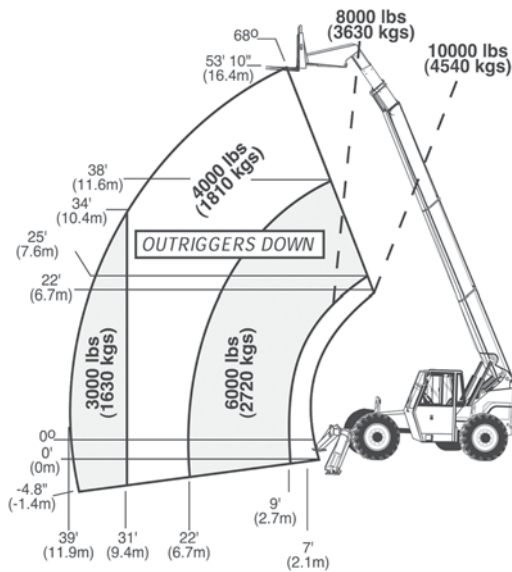
### Attachments

Bucket

Forks

Jib

## Range Chart



# 54' MATERIAL HANDLER

For more information on this equipment or if you require a free onsite inspection, contact our team

# 136 132

## Specifications

Lift height	16.40 m
Max lift capacity	4540 kg
Operating weight	12751 kg
Length less forks	6.25 m
Width	2.59 m
Height	2.58 m
Wheelbase	3.04 m
Ground clearance	0.43 m
Tread	2.14 m
Turning clearance	4.57 m
Max reach from front tyres to 24" (609 mm) load center	11.90 m

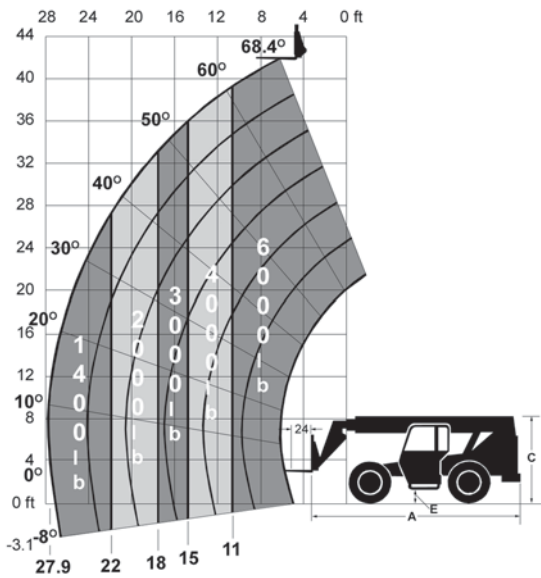
### Attachments

Bucket

Forks

Jib

## Range Chart



# 42' MATERIAL HANDLER

For more information on this equipment or if you require a free onsite inspection, contact our team

# 136 132

## Specifications

Lift height	12.70 m
Max lift capacity	2727 kg
Max reach below grade	0.90 m
Operating weight	10670 kg
Length less forks	5.89 m
Width	2.48 m
Height	2.59 m
Wheelbase	2.87 m
Ground clearance	0.40 m
Tread	2.13 m
Turning clearance	4.20 m
Max reach from front tyres to 24" (609 mm) load center	8.50 m

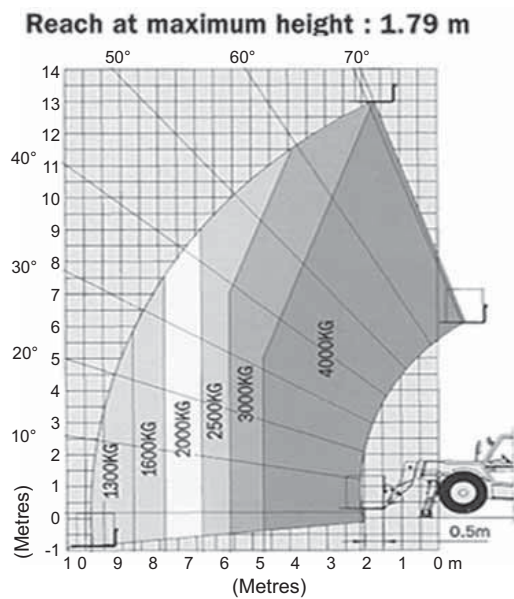
### Attachments

Bucket

Forks

Jib

## Range Chart



# 40' MATERIAL HANDLER

For more information on this equipment or if you require a free onsite inspection, contact our team

# 136 132

## Specifications

Lift height	13 m
Max lift capacity	4000 kg
Max reach	9.35 m
Operating weight	11180 kg
Length less forks	5.96 m
Width	2.43 m
Height	2.59 m
Wheelbase	1.99 m
Ground clearance	0.50 m
Turning radius (outside wheels)	4.15 m

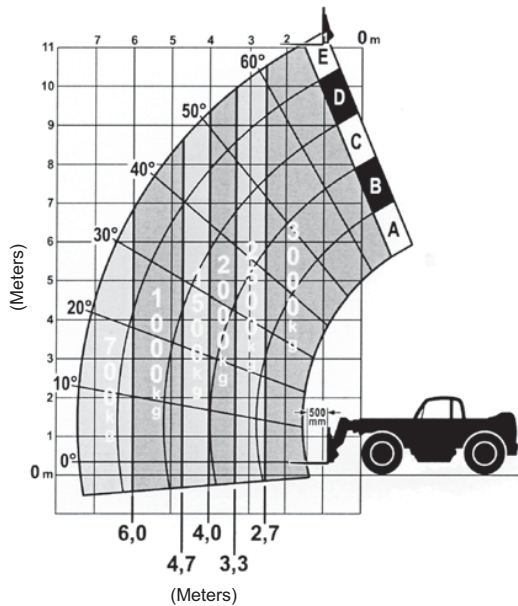
### Attachments

Bucket

Forks

Jib

## Range Chart



# 36' MATERIAL HANDLER

For more information on this equipment or if you require a free onsite inspection, contact our team

# 136 132

## Specifications

Lift height	11 m
Max lift capacity	3000 kg
Operating weight	9625 kg
Length less forks	5.72 m
Width	2.49 m
Height	2.37 m
Wheelbase	3.10 m
Ground clearance	0.40 m
Tread	2.15 m
Turning clearance	3.50 m
Max reach from front tyres to 24" (610 mm) load center	7.50 m

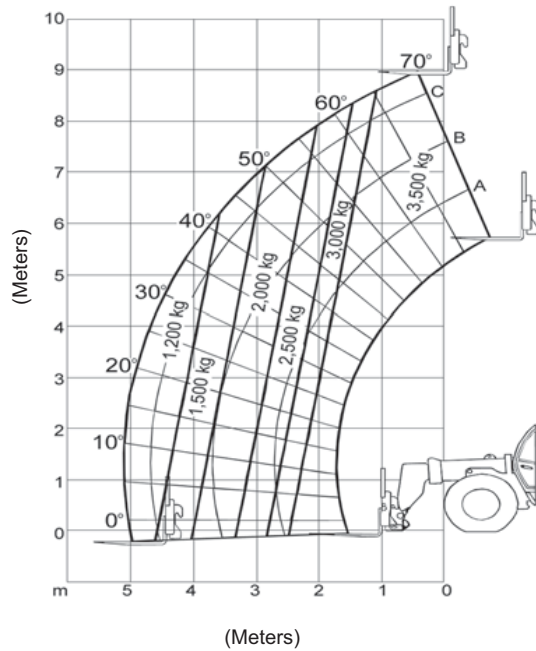
### Attachments

Bucket

Forks

Jib

## Range Chart



# 35' MATERIAL HANDLER

For more information on this equipment or if you require a free onsite inspection, contact our team

# 136 132

## Specifications

Lift height	9 m
Max forward reach	5.20 m
Max lift capacity	3500 kg
Capacity at max forward reach	1200 kg
Gross vehicle weight	8600 kg
Length less forks	5.62 m
Overall width	2.38 m
Overall height	2.41 m
Wheelbase	2.85 m
Ground clearance	0.42 m
Track width	1.92 m
Turning radius at fork	5.02 m
Gradeability	45 %

### Attachments

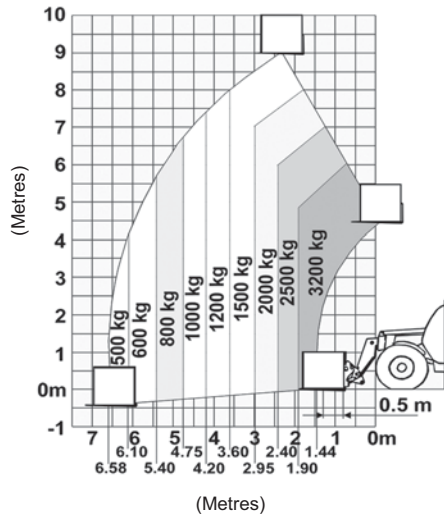
Bucket

Forks

Jib

## Range Chart

Reach at maximum height : 2.35



# 30' MATERIAL HANDLER

For more information on this equipment or if you require a free onsite inspection, contact our team

# 136 132

## Specifications

Lifting capacity at 500 mm from fork heels	3200 kg
Tipping load at max reach	673 kg
Lifting	9 m
Times: unladen/loaded (in s)	
Lifting	6.70/7.30
Lowering	5/4.70
Extension	12.20/13.30
Retraction	8/7.60
Forks (length)	1.20 m
Forks (width x thickness)	0.12 x 0.04 m
Max distance between forks	1.04 m
Carriage rotation	126 °
Max travel speed	25 km/h
Weight unladen (with forks)	7640 kg
Overall width	2.26 m
Overall height	2.30 m
Turning radius (outside wheels)	3.68 m
Overall length	4.71 m
Ground clearance	0.44 m

### Attachments

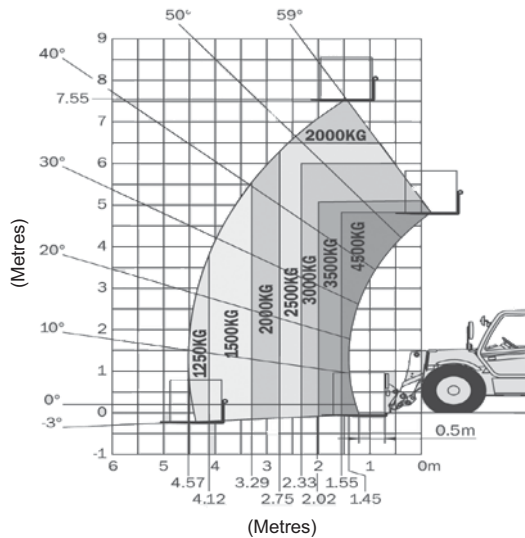
Bucket

Forks

Jib

Basket with controls

## Range Chart



# 26' MATERIAL HANDLER

For more information on this equipment or if you require a free onsite inspection, contact our team

# 136 132

## Specifications

Lifting capacity at 500 mm from forks heels	4500 kg
Tipping load at max reach	1610 kg
Lifting	7.55 m
Times: unladen/loaded (in s)	
Lifting	9.60 / 10.40
Lowering	6.10 / 5.60
Extension	9.80 / 10.10
Retraction	7.80 / 7.90
Forks (length)	1.20 m
Forks (width x thickness)	0.12 x 0.50 m
Max distance between forks	1.20 m
Carriage rotation	142 °
Max travel speed	25 km/h
Weight unladen (with forks)	8285 kg
Overall width	2.39 m
Overall height	2.56 m
Turning radius (outside wheels)	4.15 m
Overall length	5.22 m
Ground clearance	0.44 m

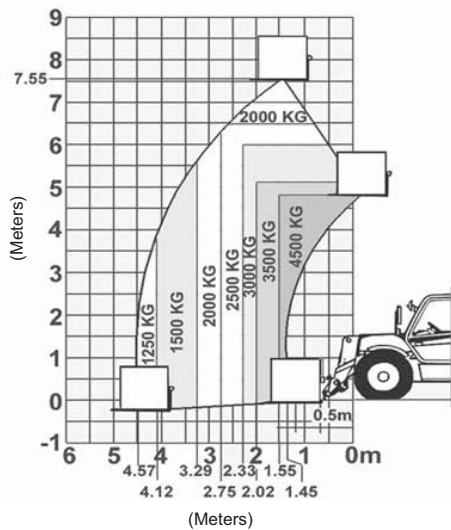
### Attachments

Bucket

Forks

Jib

## Range Chart



# 25' MATERIAL HANDLER

For more information on this equipment or if you require a free onsite inspection, contact our team

## 136 132

## Specifications

Lifting capacity At 500 mm from fork heels	4500 kg
Tipping load at max reach	1610 kg
Lifting	7.55 m
Times: unladen/loaded (in s)	
Lifting	10.50/11
Lowering	7.20/6.70
Extension	11.60/11.60
Retraction	6.5/80
Forks (length)	1.20 m
Forks (width x thickness)	0.12 x 0.055 m
Max distance between forks	0.79 m
Carriage rotation	142 °
Max travel speed	25 km/h
Weight unladen (with forks)	8300 kg
Overall width	2.41 m
Overall height	2.55 m
Turning radius (outside wheels)	4.10 m
Overall length	5.22 m
Ground clearance	0.42 m

### Attachments

Bucket

Forks

Jib



**136 132 BOOM SHERRIN**  
[www.boomsherrin.com.au](http://www.boomsherrin.com.au)