



# YOUR EWVP SOLUTIONS GUIDE

**BOOM** SHERRIN

# At BOOM Sherrin we're much more than just an elevated work platform supplier.

For more than 40 years now we've been offering tailored EWP solutions from a comprehensive equipment fleet Australia-wide; backed by on-call sales and service assistance; reliable solutions and one of the safest working practices in the industry.

## GRADEABILITY CONVERSION

### Gradeability

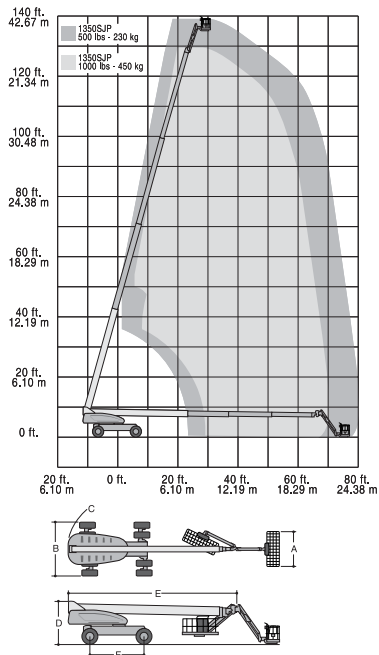
5%	10%	15%	20%	25%	30%	35%	40%	45%	50%	55%	60%
2.86	5.71	8.53	11.31	14.04	16.70	19.29	21.80	24.23	26.57	28.81	30.96

### Degrees

### PLEASE NOTE

Every effort has been made to accurately specify our equipment in the following pages. Due to availability of equipment actual makes & models supplied may vary from what is indicated. BOOM Sherrin specifies "Working Height" at a standard additional height of 6ft (1.8m) above the manufacturer's specified platform height.

## Range Chart



# 135' JLG BOOM LIFT

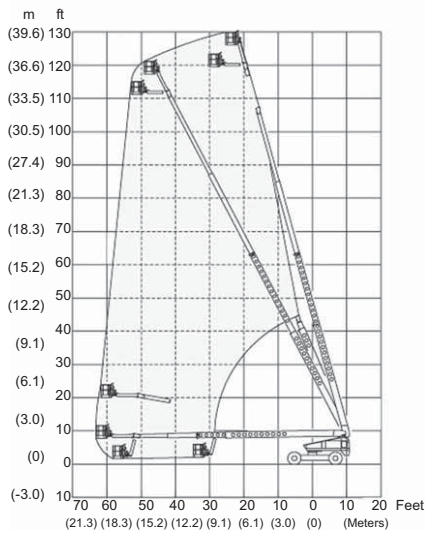
For more information on this equipment or if you require a free onsite inspection, contact our team

# 136 132

## Specifications

Working height	43.00 m
Platform height	41.15 m
Horizontal reach	24.38 m
Swing	Continuous 360 °
Platform capacity - restricted	450 kg
Platform rotator	180 °
Overall width - retracted	2.49 m
Overall width - extended	3.80 m
Tailswing	1.67 m
Stowed height	3.05 m
Stowed length	11.86 m
Wheelbase	3.81 m
Ground clearance - axle	30 cm
Ground clearance - chassis	65 cm
Gross vehicle weight	20300 kg
Fueltank capacity	117 L

## Range Chart



# 126' BOOM LIFT WITH FLY BOOM

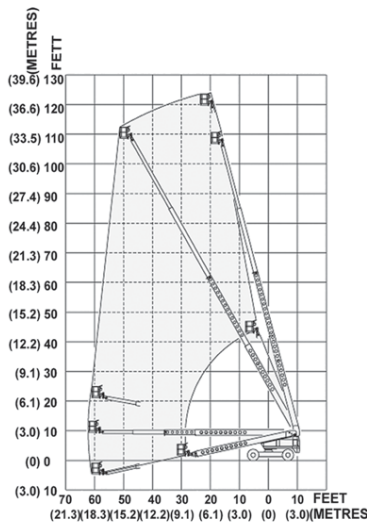
For more information on this equipment or if you require a free onsite inspection, contact our team

# 136 132

## Specifications

Working height	40.23 m
Platform height	38.40 m
Platform safe working load	227 kg
Platform size	0.76 x 2.34 m
Horizontal reach	19.20 m
Turntable rotation	360 ° continuous
Max drive speeds high (booms stowed only)	4.83 km/h
Max drive speeds middle (booms stowed only)	2.42 km/h
Max drive speeds low (below mid elevation)	1.21 km/h
Max drive speeds creep (beyond mid elevation)	0.18 km/h
Gradeability	25 %
Turning radius (inside x/axle extended)	6.10 m
Height (stowed)	3.10 m
Width (stowed)	2.60 m
Width (axle extended)	3.90 m
Stowed length	13 m
Wheel base	3.66 m
Overall weight (approx)	18978 kg
Basket rotation	180 °

## Range Chart



# 120' BOOM LIFT

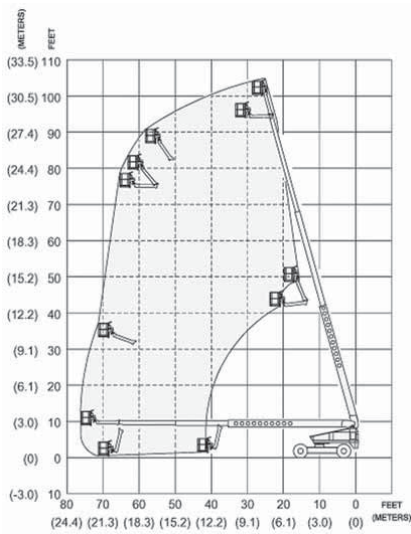
For more information on this equipment or if you require a free onsite inspection, contact our team

# 136 132

## Specifications

Working height	38.40 m
Platform height	36.60 m
Platform safe working load	227 m
Platform size	2.34 x 0.76 m
Horizontal reach	18.90 m
Turntable rotation	360 ° continuous
Max drive speeds high (booms stowed only)	4.80 km/h
Max drive speeds middle (booms stowed only)	2.40 km/h
Max drive speeds low (below mid elevation)	1.20 km/h
Max drive speeds creep (beyond mid elevation)	018 km/h
Gradeability	25 %
Turning radius inside	6.10 m
Height (stowed)	3.04 m
Width (stowed)	2.60 m
Width (axle extended)	3.90 m
Length (stowed)	12.90 m
Wheelbase	3.70 m
Overall weight (approx)	17917 kg
Basket rotation	180 °

## Range Chart



# 100' BOOM LIFT WITH FLY BOOM

For more information on this equipment or if you require a free onsite inspection, contact our team

# 136 132

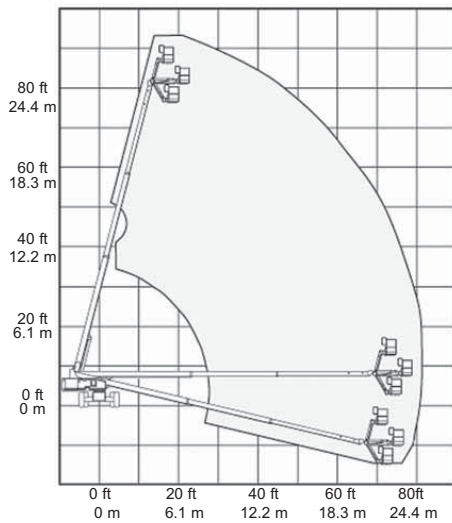
## Specifications

Working height	32.30 m
Platform height	30.48 m
Platform safe working load	227 kg*
Platform size	2.34 x 0.76 m
Horizontal reach	20.10 m
Elevation	+74 ° / -1 °
Turntable rotation	360° continuous
Max drive speeds high (booms stowed only)	4.80 km/h
Max drive speeds low (boom mid elevation)	1.20 km/h
Max drive speeds creep (beyond mid elevation)	3 mpm
Gradeability	25 %
Turning radius (inside x/axle extended)	5.30 m
Height (stowed)	3.20 m
Width (stowed)	2.60 m
Width (axle extended)	3.90 m
Stowed length	13.60 m
Wheel base	3.70 m
Overall weight (approx)	14969 kg
Basket rotation	180 °

### PLEASE NOTE

\*Only 227 kg (500 lbs) for steel basket & 272 kg for all basket.

## Range Chart



# 85' BOOM LIFT WITH FLY BOOM

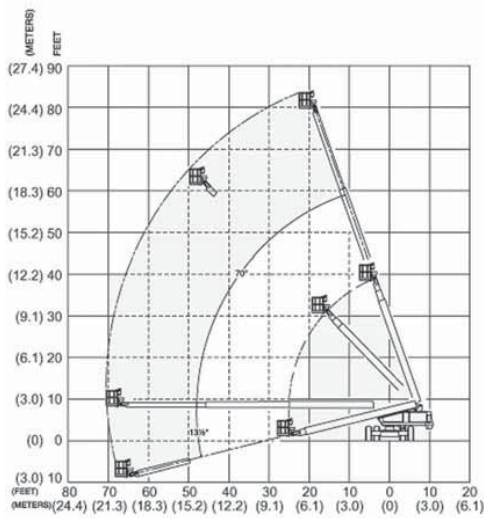
For more information on this equipment or if you require a free onsite inspection, contact our team

# 136 132

## Specifications

Working height	27.70 m
Platform height	25.90 m
Platform size	0.91 x 2.40 m
Basket rotation	160 °
Safe working load	227 kg
Horizontal reach	23.40 m
Wheelbase	2.74 m
Turntable rotation	360 ° continuous
Turntable tailswing	1.10 m
Drive speeds (stowed)	4.90 km/h
Drive speeds (raised)	1.10 km/h
Gradeability	38 %
Turning radius (inside)	3.20 m
Turning radius (outside)	7 m
Stowed height	2.80 m
Stowed length	12.40 m
Width (axles retracted)	2.40 m
Width (axles extended)	3.04 m
Overall weight (approx)	16266 kg

## Range Chart



# 80' BOOM LIFT

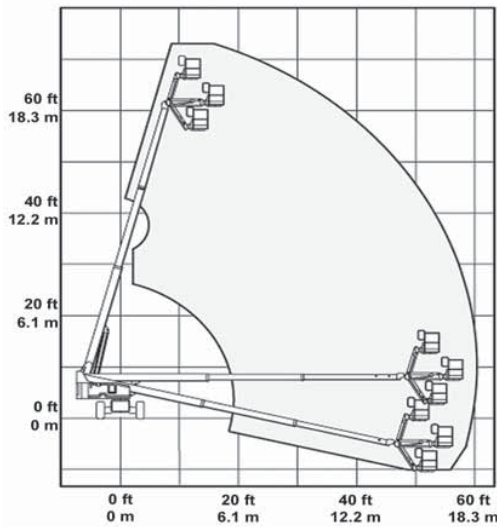
For more information on this equipment or if you require a free onsite inspection, contact our team

# 136 132

## Specifications

Working height	26.20 m
Platform height	24.40 m
Platform safe working load	227 kg
Platform size	0.76 x 1.52 m
Platform basket rotation	160 °
Horizontal reach	21.70 m
Turret rotation	360 ° continuous
Max drive speeds (booms stowed)	4.80 km/h
Max drive speeds (booms elevated)	1.21 km/h
Turning radius	5.30 m
Stowed height	2.90 m
Stowed width	2.60 m
Stowed length	11.80 m
Wheelbase	3.70 m
Overall weight (approx)	
Snorkel	13744 kg
Genie	15500 kg
Width (axles retracted)	2.40 m
Width (axles extended)	3.04 m

## Range Chart



## 66' BOOM LIFT WITH FLY BOOM

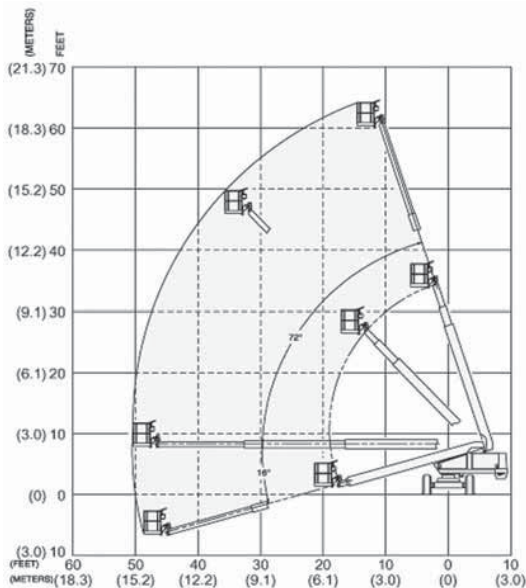
For more information on this equipment or if you require a free onsite inspection, contact our team

# 136 132

## Specifications

Working height	21.90 m
Platform height	20.10 m
Platform size	0.76 x 1.52 m
Basket rotation	180 °
Safe working load	227 kg
Horizontal reach	17.10 m
Wheelbase	3 m
Turntable rotation	360 ° continuous
Turntable tailswing	1 m
Drive speeds (stowed)	4.80 km/h
Drive speeds (raised)	1.60 km/h
Gradeability (stowed)	25 %
Turning radius (inside)	3.70 m
Turning radius (outside)	6.80 m
Stowed height	2.70 m
Stowed length	10.10 m
Width	2.50 m
Overall weight (approx)	12477 kg

## Range Chart



# 60' BOOM LIFT

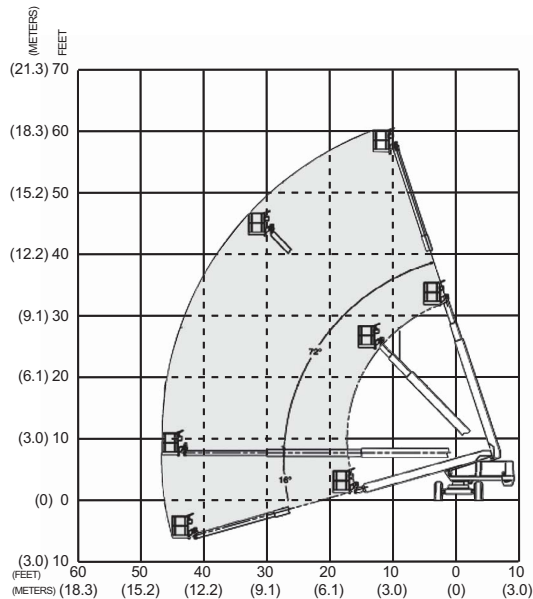
For more information on this equipment or if you require a free onsite inspection, contact our team

# 136 132

## Specifications

Working height	20.10 m
Max platform height	18.30 m
Horizontal reach	15.20 m
Platform size	1.52 x 0.76 m
Safe working load	227 kg
Max travel speed (booms stowed)	4.80 km/h
Max travel speed (booms elevated)	1.60 km/h
Turning radius (inside)	4.70 m
Overall length (stowed)	9.40 m
Overall width	2.45 m
Overall height (stowed)	2.70 m
Wheelbase	3.10 m
Overall weight (approx)	10000 kg
Basket rotation	180 °
240 volt power to basket	

## Range Chart



# 55' BOOM LIFT

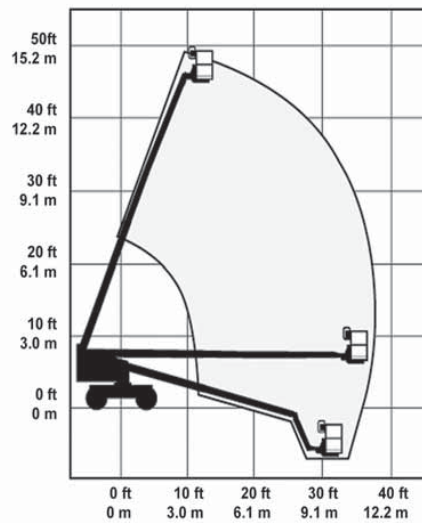
For more information on this equipment or if you require a free onsite inspection, contact our team

# 136 132

## Specifications

Working height	18.30 m
Max platform height	16.50 m
Horizontal reach	14 m
Platform size	0.78 x 1.72 m
Safe working load	227 kg
Max travel speed (when raised)	1.60 km/h
Max drive	3.20 km/h
Turning radius (inside)	3.80 m
Gradeability	40 %
Overall length (stowed)	6.77 m
Overall width	2.27 m
Overall height (collapsed)	2.58 m
Overall weight (approx)	6400 kg

## Range Chart



## 45' BOOM LIFT WITH FLY BOOM

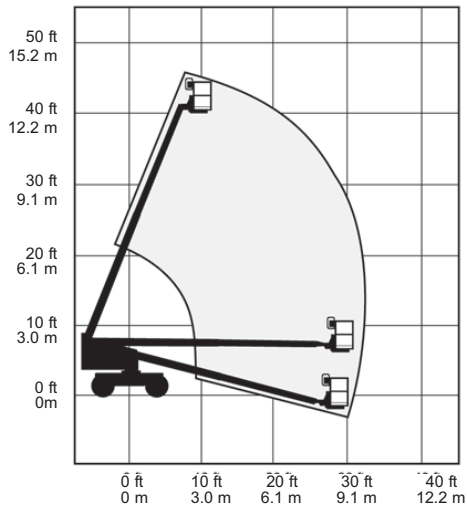
For more information on this equipment or if you require a free onsite inspection, contact our team

# 136 132

## Specifications

Working height	15.50 m
Platform height	13.70 m
Platform size	0.91 x 2.40 m
Platform safe working load	227 kg
Horizontal reach	11.20 m
Wheelbase	2.20 m
Turntable rotation	360 ° continuous
Turntable tailswing	0.864 m
Drive speeds (stowed)	4.50 km/h
Drive speeds (raised)	1.10 km/h
Gradeability	40 %
Turning radius (inside)	2.00 m
Turning radius (outside)	4.80 m
Stowed height	2.50 m
Stowed length	8.50 m
Width	2.30 m
Overall weight (approx)	6709 kg
Basket rotation	160 °

## Range Chart



# 40' BOOM LIFT

For more information on this equipment or if you require a free onsite inspection, contact our team

# 136 132

## Specifications

Working height	14 m
Platform height	12.20 m
Platform size	0.71 x 1.80 m
Safe working load	227 kg
Horizontal reach	9.70 m
Wheelbase	2.20 m
Turntable rotation	360 ° continuous
Turntable tailswing	0.87 m
Drive speeds stowed (gas/lpg)	6.40 km/h
Drive speeds stowed (diesel)	6.10 km/h
Drive speeds raised	1.10 km/h
Gradeability (stowed)	30 %
Turning radius (inside)	2.00 m
Turning radius (outside)	4.80 m
Stowed height	2.50 m
Stowed length	7.30 m
Stowed width	2.30 m
Overall weight (approx)	5284 kg
Basket rotation	160 °



**136 132 BOOM SHERRIN**

**[www.boomsherrin.com.au](http://www.boomsherrin.com.au)**